



Buyer's Guide to Fleet & Asset Tracking

GPS Technologies provides solutions that enable the best, most accurate, most encompassing personal and fleet tracking and monitoring services available today. We believe it is important to understand and analyze data like vehicle speed, location, driven routes, idle-times, and other such status updates in order to protect the integrity of your assets. GPS monitoring services are not new, and the data they generate is useless if you cannot easily view and analyze what is being logged. GPS Technologies focuses on user experience, enabling you to view, review, and streamline business processes via GPS location data.

BENEFITS

Additional benefits from GPS tracking include everything from identifying routes for optimization, adapting for unforeseen challenges, to monitoring the status of high-priority assets. Your fleet is valuable, and GPS tracking services are a solution for business optimization.

Along with monitoring your fleet vehicles and their assets, GPS tracking allows you to leverage the technology to provide general vehicle GPS tracking to assist you in keeping

tabs on high-risk drivers or helping to monitor your new teen driver. Our GPS devices are small and discrete while providing up-to-the-minute updates that make personal GPS tracking easy and efficient for anyone viewing the alerts and data logs. Whether you are a concerned parent, the distribution manager of large-scale fleet operations, a supervisor at a city fleet, a school bus driver, or someone hired to analyze and interpret data for continuous improvement, GPS tracking is a great and affordable solution.



We have assembled a comprehensive guide for all your asset and fleet tracking needs. The use-cases for GPS tracking solutions are likely much broader than you know, ranging from concerned parents monitoring their teen driver, all the way up to supervisors monitoring

real-time updates of incredibly time-sensitive assets, like organ deliveries.

7 WAYS FLEET TRACKING HELPS YOUR BUSINESS

There are many reasons to enable GPS tracking of your fleet, including:

1. Reduce Overtime

By tracking your fleet, you will know exactly when your vehicles are being driven, and this leads to accurate logging of hours driven, all but eliminating overtime hour padding.

2. Reliable Mileage Reports

If your drivers are paid by the mile, GPS tracking can help ensure they are honest with their reporting. Mapping the routes driven will enable you to be sure that you are not paying your drivers to run their errands or needlessly pad their mileage by taking circuitous routes.

3. Lower Fuel Costs

Route optimization is one of the key benefits of GPS tracking solutions. The route your driver takes may not be the most efficient one, and fuel costs can be saved by taking shorter or less-trafficked routes that allow assets to be delivered as efficiently as possible. Tracking of vehicle idling is also available to prevent unnecessary fuel consumption.



4. Prevent Unauthorized Vehicle Usage

Fleet vehicles are licensed for company usage, not personal usage. To prevent insurance rates from rising, you would do well to know that your fleet vehicles are only be used when they are supposed to. Employee abuse of company vehicles can be a serious issue if an insurance claim is filed. GPS tracking will allow you to know all the times any equipped vehicle is used, appropriately or not.

5. Improved Driver Accountability

Sometimes drivers can be less than scrupulous when it comes to how they drive. GPS tracking allows for information about hard braking and hard acceleration events to be logged, allowing for potentially dangerous driving behaviors to be curtailed. Excessive speed alerts can also be issued, so you know that your drivers are not needlessly risking lives or the integrity of your assets.

6. Reduce Maintenance Costs

By accurately logging the mileage driven and the routes that are taken, vehicle maintenance alerts can be issued to ensure that your fleet vehicles are not incurring unnecessary wear and tear. Alerts can also remind you to make repairs under warranty claims, further saving costs.



7. Lower Labor Costs

By accurately tracking your fleet and monitoring vehicle usage, you are optimally minimizing the chances of an adverse event occurring - like vehicle theft. This lowers operational costs across the board by not dragging in more staff to account for legal or insurance reasons.

Accurate data tracking also eliminates unnecessary time spent performing tasks that are now completely automated.

WHAT NEEDS TO BE TRACKED?

As of December 18, 2017, all motor carriers must comply with the Federal Motor Carrier Safety Administration (FMCSA) Electronic Logging Device (ELD) mandate which states that all vehicles must use Electronic On Board Recording Devices (EOBR's), also known as ELD's, as well as automated Hours of Service Reporting (HOS). Your drivers will be required to submit their automated logs at all weigh stations as well as upon request from officials such as law enforcement.

GPS Technologies has compliant tracking applications for all the above agencies. All the requisite data is logged electronically. Gone are the days of having to track all this with paper. Conveniently logged, all the data about your fleets mileage, routes, speed, locations, and more are stored electronically and hassle-free.

How large is your fleet? Does your company have a company car? Do you reliably and accurately know how often it is being used? GPS tracking units are discreet and covert, allowing for them to be installed on any vehicle. If you are a city fleet supervisor and want to know where all your cars are, then GPS tracking is ideal.

Do you operate hundreds or thousands of vehicles across the country? GPS Technologies is there for you by providing a convenient way to access and view all your assets. Sometimes you only need GPS reports every five minutes,

and sometimes you need continuous satellite tracking providing live updates.

Regardless of your use-case, or your fleet size, fleet vehicle composition, GPS tracking solutions are an affordable solution for everyone from a parent to a small business to the largest scaled operations imaginable.

WHAT ARE YOUR OPTIONS?

1. Vehicle Track

GPS Vehicle Tracking Devices / Systems for Car & Auto



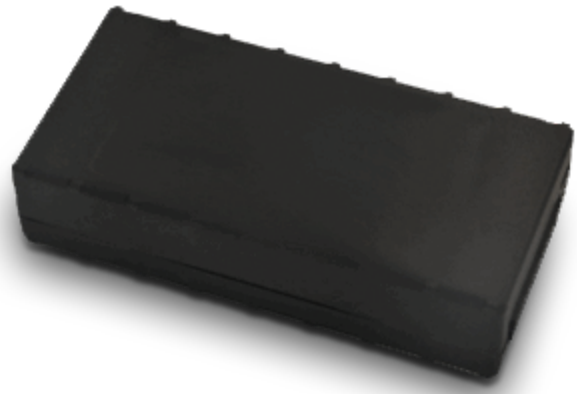
[LEARN MORE >](#)

Any car or truck in your fleet can be monitored with data reporting and tracking histories, which allow you to know where all your fleet vehicles are at any time. The complete time tracking module generates updates that are logged every minute. This will allow you to know, in the greatest detail, all the stops, stop durations, addresses, miles, driven, speeds traveled, and routes taken by all your drivers.

A small GPS tracking device is attached to all your fleet vehicles and allows you to increase your productivity, reduce overtime, control fuel costs, and increase driver accountability. Bad driver habits, like hard braking and sudden acceleration, can generate system alerts. Speed alerts are also included to ensure that your drivers are driving safely.

2. Value Track

Low Cost, Full-Time GPS Vehicle



[LEARN MORE >](#)

For those who operate smaller fleets, or who do not need to know all the minute details of their drivers and their routes, the Value Track solution is ideal. It is low cost while providing you with logged info about stops, stop lengths, idle time, mileage, routes taken, and addresses visited. The installation of the GPS device is covert and inconspicuous. Email and alerts are included along with geo-fencing and landmarking. Depending on the specificity required, data can be logged every 5 minutes or

at most every minute, depending on the plan you select. This is a great option for city fleets and small to medium businesses.

3. Sat Track

Real-Time Asset & Satellite GPS Tracking System



[LEARN MORE >](#)

Sometimes you need live satellite tracking to reduce your operating costs and increase productivity. Real-Time Asset Tracking provides 100% continuous asset tracking via constant satellite data transmission. With a lag of only a couple seconds, satellite network will allow you directly communicate with drivers to efficiently update routes, make last-second additional pickups when not carrying full loads, and be alerted to emergency situations by adding the Mobile Data Terminal. The scheduling and dispatch functionality, along with the optional two-way messaging terminal allows for a robust and field-proven solution to sending, receiving, and logging messages in even the harshest conditions.

Sat Track also provides alerts for excessive speed, and boundary/geo-fencing automated

alerts. This is the solution for complete resource management of your fleet.

4. Smart Fleet Track Vehicle

GPS Tracking Devices & Management



[LEARN MORE >](#)

This highly accurate tracking device is covert and incredibly difficult to tamper with. The Smart Fleet Track module is small and can be covertly hidden and installed under the dashboard or hidden in the A-Frame pillar. The Heartbeat function is what is most valuable about this package. The covert module will send a location report every hour while the vehicle ignition is turned off, preventing tampering with the system. You will also get notifications if your vehicle is moving without being turned on, so you will know when your vehicle equipped with this device is being towed. This service also comes with an easy to use web app and handy vehicle maintenance reminder.